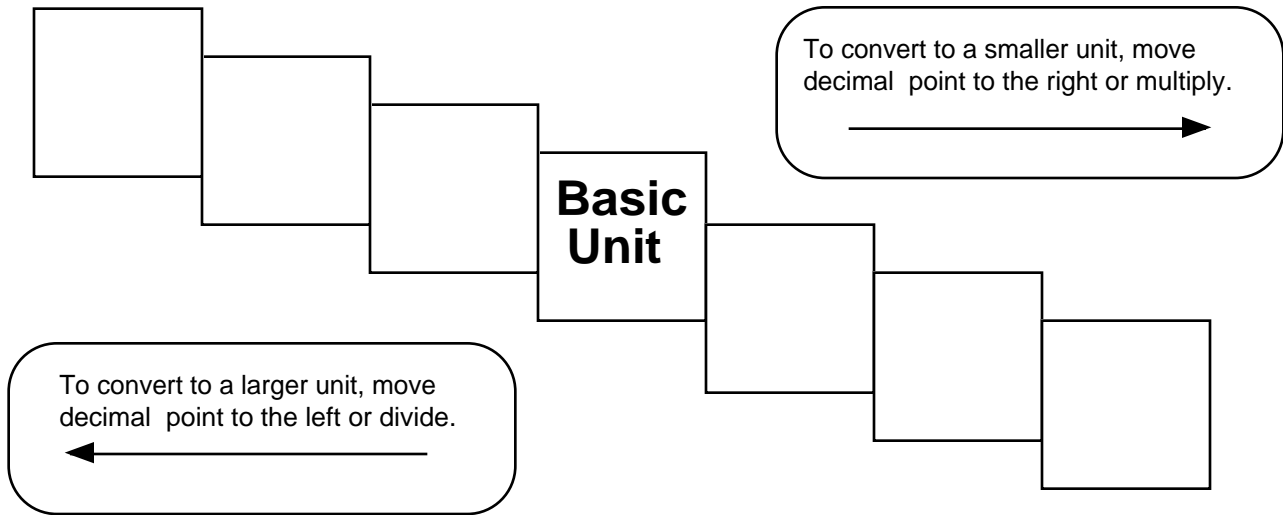


# Metric Mania

## Conversion Practice

Name \_\_\_\_\_



Try these conversions, using the ladder method.

$1000 \text{ mg} = \underline{\hspace{2cm}} \text{ g}$

$1 \text{ L} = \underline{\hspace{2cm}} \text{ mL}$

$160 \text{ cm} = \underline{\hspace{2cm}} \text{ mm}$

$14 \text{ km} = \underline{\hspace{2cm}} \text{ m}$

$109 \text{ g} = \underline{\hspace{2cm}} \text{ kg}$

$250 \text{ m} = \underline{\hspace{2cm}} \text{ km}$

Compare using  $<$ ,  $>$ , or  $=$ .

$56 \text{ cm} \bigcirc 6 \text{ m}$

$7 \text{ g} \bigcirc 698 \text{ mg}$

## Conversion Challenge

Write the correct abbreviation for each metric unit.

1) Kilogram \_\_\_\_\_

4) Milliliter \_\_\_\_\_

7) Kilometer \_\_\_\_\_

2) Meter \_\_\_\_\_

5) Millimeter \_\_\_\_\_

8) Centimeter \_\_\_\_\_

3) Gram \_\_\_\_\_

6) Liter \_\_\_\_\_

9) Milligram \_\_\_\_\_

Try these conversions, using the ladder method.

1) 2000 mg = \_\_\_\_\_ g

6) 5 L = \_\_\_\_\_ mL

11) 16 cm = \_\_\_\_\_ mm

2) 104 km = \_\_\_\_\_ m

7) 198 g = \_\_\_\_\_ kg

12) 2500 m = \_\_\_\_\_ km

3) 480 cm = \_\_\_\_\_ m

8) 75 mL = \_\_\_\_\_ L

13) 65 g = \_\_\_\_\_ mg

4) 5.6 kg = \_\_\_\_\_ g

9) 50 cm = \_\_\_\_\_ m

14) 6.3 cm = \_\_\_\_\_ mm

5) 8 mm = \_\_\_\_\_ cm

10) 5.6 m = \_\_\_\_\_ cm

15) 120 mg = \_\_\_\_\_ g

Compare using <, >, or =.

16) 63 cm  6 m17) 5 g  508 mg18) 1,500 mL  1.5 L19) 536 cm  53.6 dm20) 43 mg  5 g21) 3.6 m  36 cm